

Visual Field Test basic level

Overview

A visual field acuity test is a painless test that determines how well a person can see. The test maps central vision as well as peripheral (side) vision. The test is performed by an ophthalmologist and is used to detect areas of vision loss (blind spots) caused by a brain tumor, stroke, glaucoma, diabetes, hypertension, or head trauma. It can also be used to monitor the progression of previously known visual field loss.

How does a visual field test work?

During a visual field acuity test, also called a perimetry test, you will respond to a series of flashing lights while looking straight ahead. Your responses will help the doctor determine whether you have a visual field loss.

The area of vision loss gives clues as to where in the visual pathway a problem has occurred. Vision begins with special receptors at the back of the eye in the retina. The image captured by each eye is sent to the brain by the optic nerves (Fig. 1). When the nerves reach the optic chiasm, they cross over each other. The nerve fibers from the inside half of each retina cross to the other side of the brain, while the nerve fibers from the outside half of the retina stay on the same side of the brain. At the end of the optic nerve, the optic radiations send the images to the occipital lobe at the back of the brain. The area where vision is interpreted is called the primary visual cortex.

What does a visual field test show?

The visual field test produces a computer printout of the light thresholds that the patient's eyes were able to perceive and process (Fig. 2). The darkest areas of the test indicate a complete loss of vision in that area. The lighter the area, the more vision the patient has in that part of the eye.

Visual field loss, also known as "visual field cut," can be partial or complete. For example, it can range from a nearly complete loss of peripheral vision to a small area of partial loss. People with visual field loss may have trouble seeing objects out of the corner(s) of their eyes, lose their place while reading, startle when people or objects move toward them, or bump into people and objects.

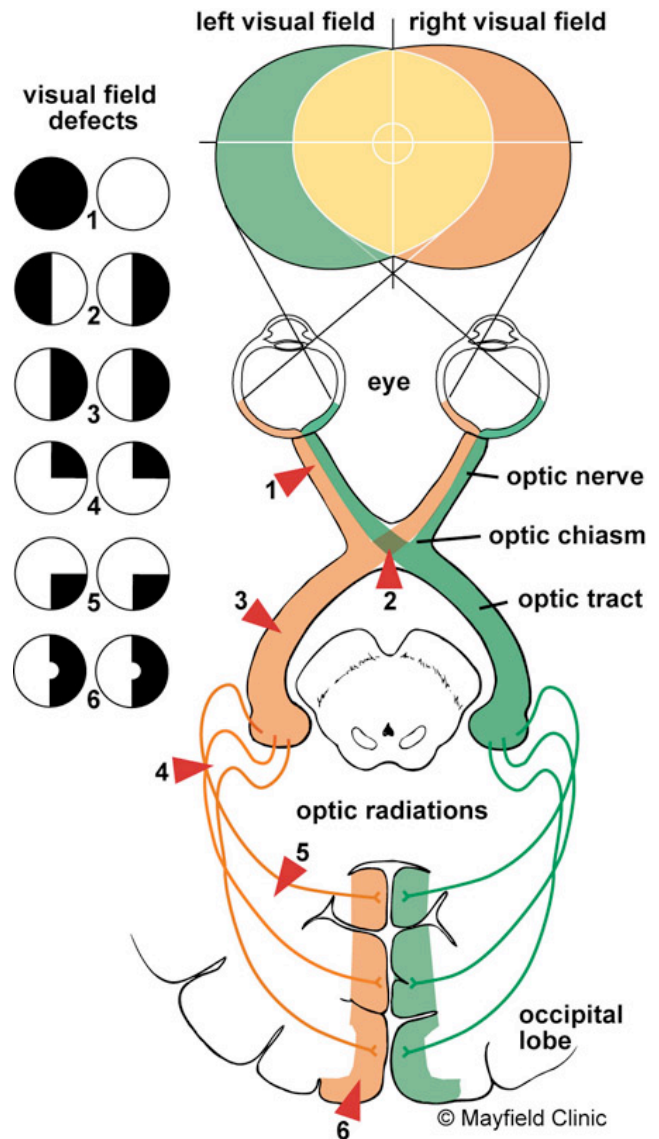


Figure 1. Visual field defects can vary depending where along the visual pathway a lesion (red triangle) is located.

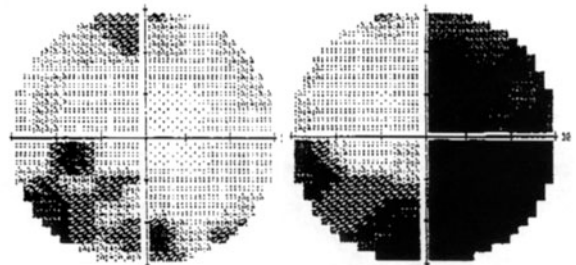


Figure 2. Visual field test of a patient with a meningioma shows vision loss (black areas) in half of the right eye, called hemianopia.

A visual field test can also tell the ophthalmologist and surgeon whether a lesion is located in front of, on, or behind the optic chiasm. Such information is used to help plan the patient's surgery and to establish a vision baseline that can be referred to for comparison after brain surgery.

Who performs the test?

An ophthalmologist, a doctor who specializes in diseases and surgery of the eye, eyelids, and areas surrounding the eyes, performs the visual field test. You also may be examined by a neuro-ophthalmologist, a specialist who treats patients with vision problems that originate in the brain. A neuro-ophthalmologist can be either a neurologist or an ophthalmologist with additional training. Eye problems most likely to need treatment by a neuro-ophthalmologist are those that affect the optic nerve or the nerves that control the eye muscles and pupils.

How should I prepare for the test?

There is no special preparation for the test. Listen closely while undergoing the test so that the results are as accurate as possible.

What happens during the test?

During the test you will sit in front of a concave dome and stare at an object in the middle. Each eye is tested separately, and the eye not being tested is covered with a patch. You will be asked to press a button when you see small flashes of light in your peripheral vision.

Occasionally, a patient presses the button by accident (causing a false positive) or fails to press the button when a flash of light appeared (causing a false negative). The reliability of the test also depends on the patient's ability to look straight ahead and avoid looking around at the targets. A patient who is sleepy or confused may also have difficulty doing the test.

Visual field results are interpreted to establish artifact from disease to account for an abnormal test. Some patients will have a completely normal test, while others will show a visual field loss that is in one or both eyes).

Following the visual field test, your eyes may be dilated to examine the retina, macula, and optic nerve. This is to ensure that there is no other cause for visual field loss, visual impairment, or other ocular disease.

What are the risks?

The test carries no risks.

How do I get the test results?

A neuro-ophthalmologist will promptly review your results and communicate directly with your referring doctor, who will discuss the results with you at a later time.

Sources & links

If you have further questions about this diagnostic test, contact the doctor who ordered the test.

Links

www.aao.org
www.geteyesmart.org

Glossary

bitemporal hemianopia: the two halves lost are on the outside of each eye's peripheral vision, effectively creating a central visual tunnel.

hemianopia: loss of half of the visual field.

homonymous hemianopia: the two halves lost are on the corresponding area of visual field in both eyes, i.e., either the left or the right half of the visual field.

altitudinal hemianopia: refers to the horizontal dividing line of visual loss, with that loss occurring either above or below the line.

quadrantanopia: is an incomplete hemianopia, referring to a quarter of the schematic "pie" of visual field loss.

scotoma: a blind spot occurring in any part of the visual field.

updated > 11.2010

reviewed by > Tara Orgon Stamper, NP, Karl Golnick, MD



This information is not intended to replace the medical advice of your doctor or health care provider. For more information about our editorial policies and disclaimer of liability visit www.mayfieldclinic.com/policies.htm, or write to attn: Tom Rosenberger, Mayfield Clinic & Spine Institute, 506 Oak Street, Cincinnati, OH 45219 513.221.1100 • 800.325.7787

© Mayfield Clinic 2010. All rights reserved.